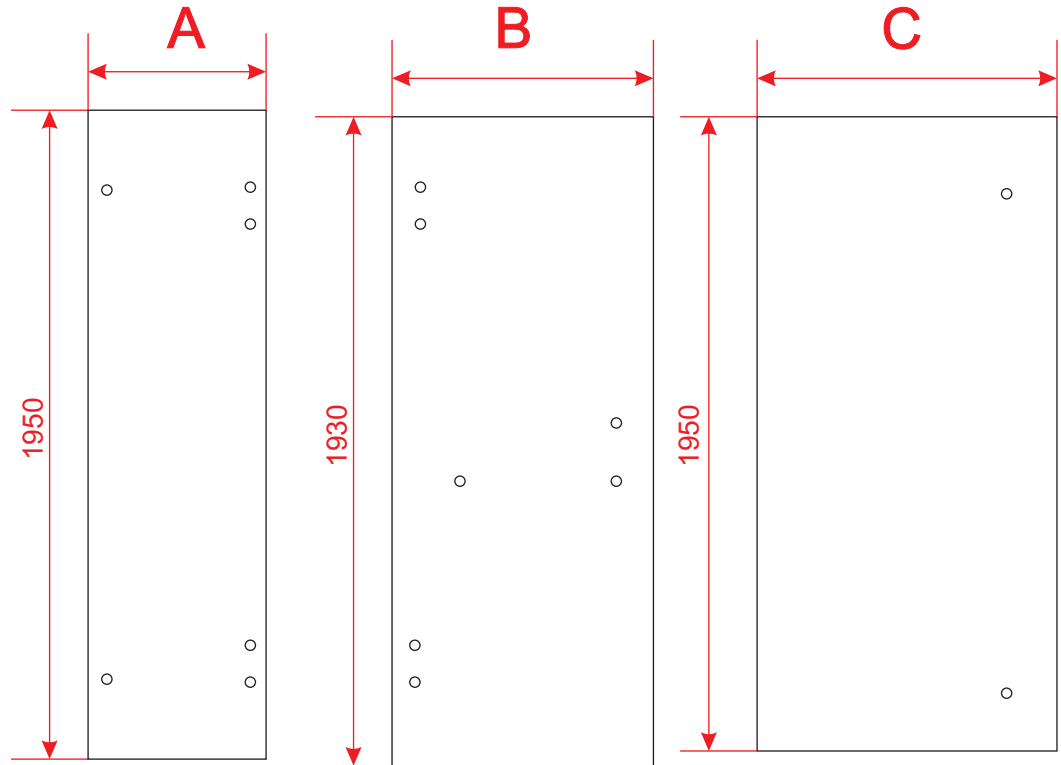
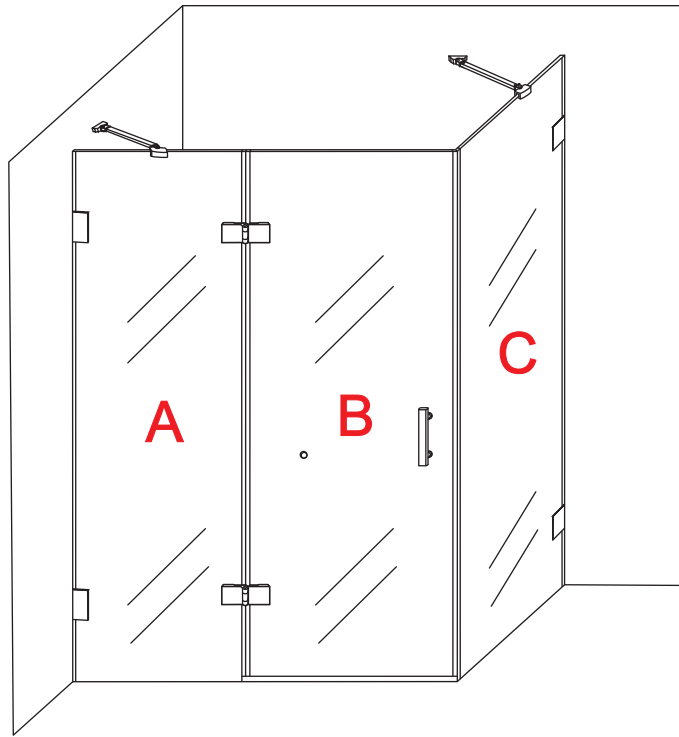
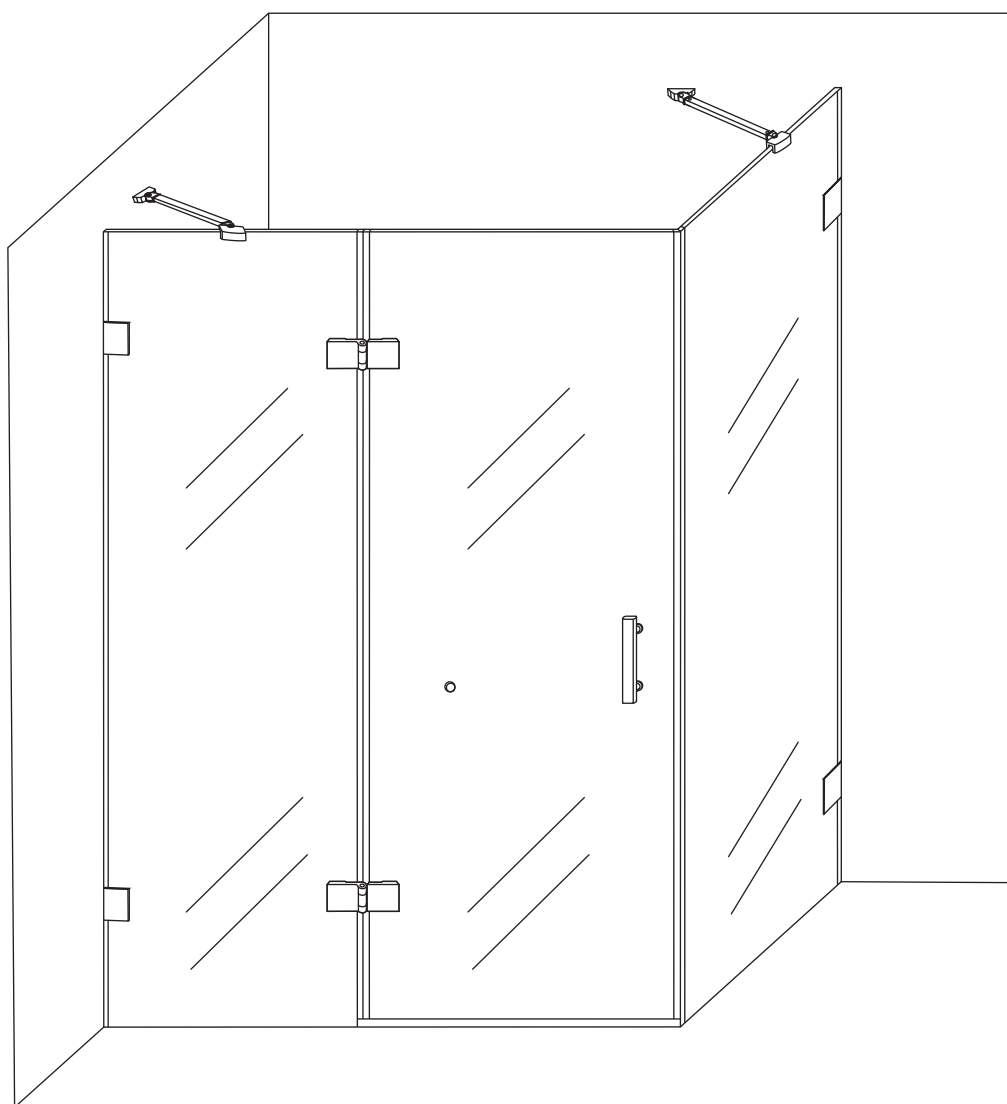


size	A	B	C
1200X800X1950	570	580	760
1200X900X1950	570	580	830

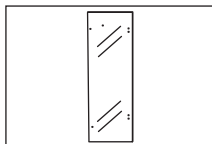
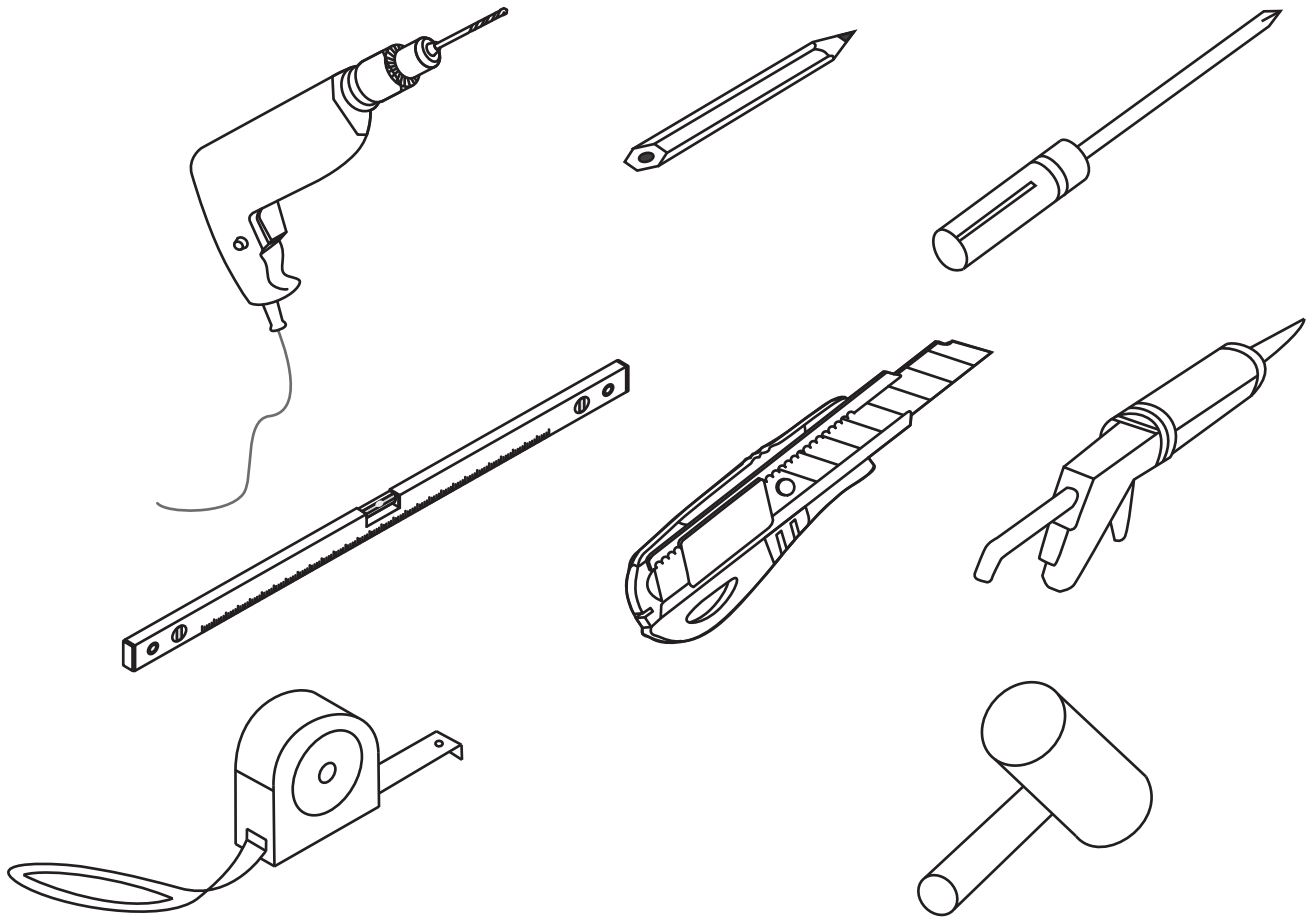


INSTALLATION MANUAL

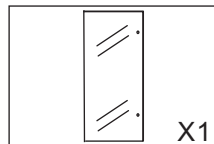


CR503-80120/CR503-90120

RoHS **CE** ISO9001:2015

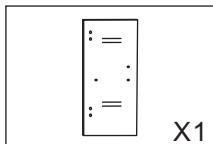


Glass



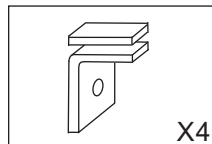
X1

Glass



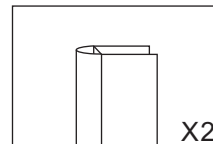
X1

Glass



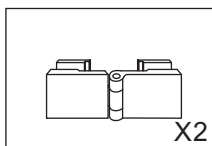
X4

PJ-4322



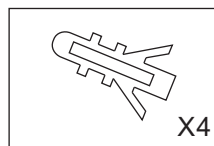
X2

CT-8DSTC



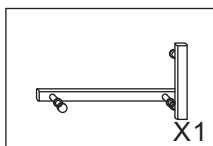
X2

HY-3319



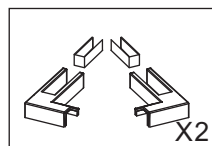
X4

Expand tube



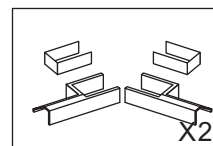
X1

LS-1202



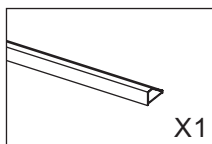
X2

PJ-4789



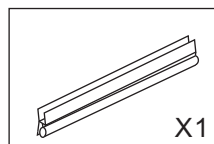
X2

PJ-4789



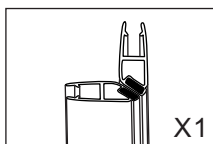
X1

**Aluminum
bottom bar**



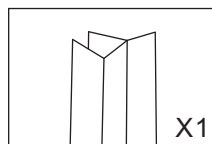
X1

**water-proof
gasket**



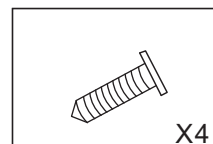
X1

**magnetic
stripe**



X1

**water-proof
gasket**

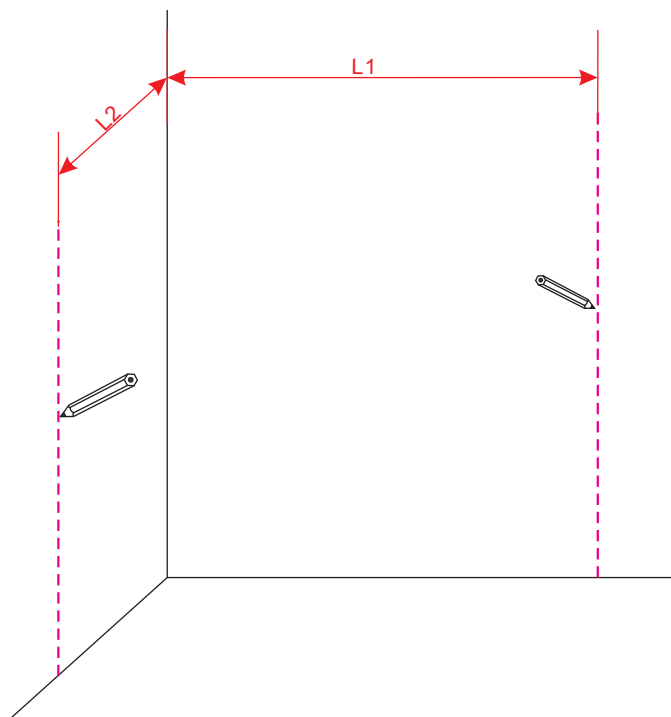


X4

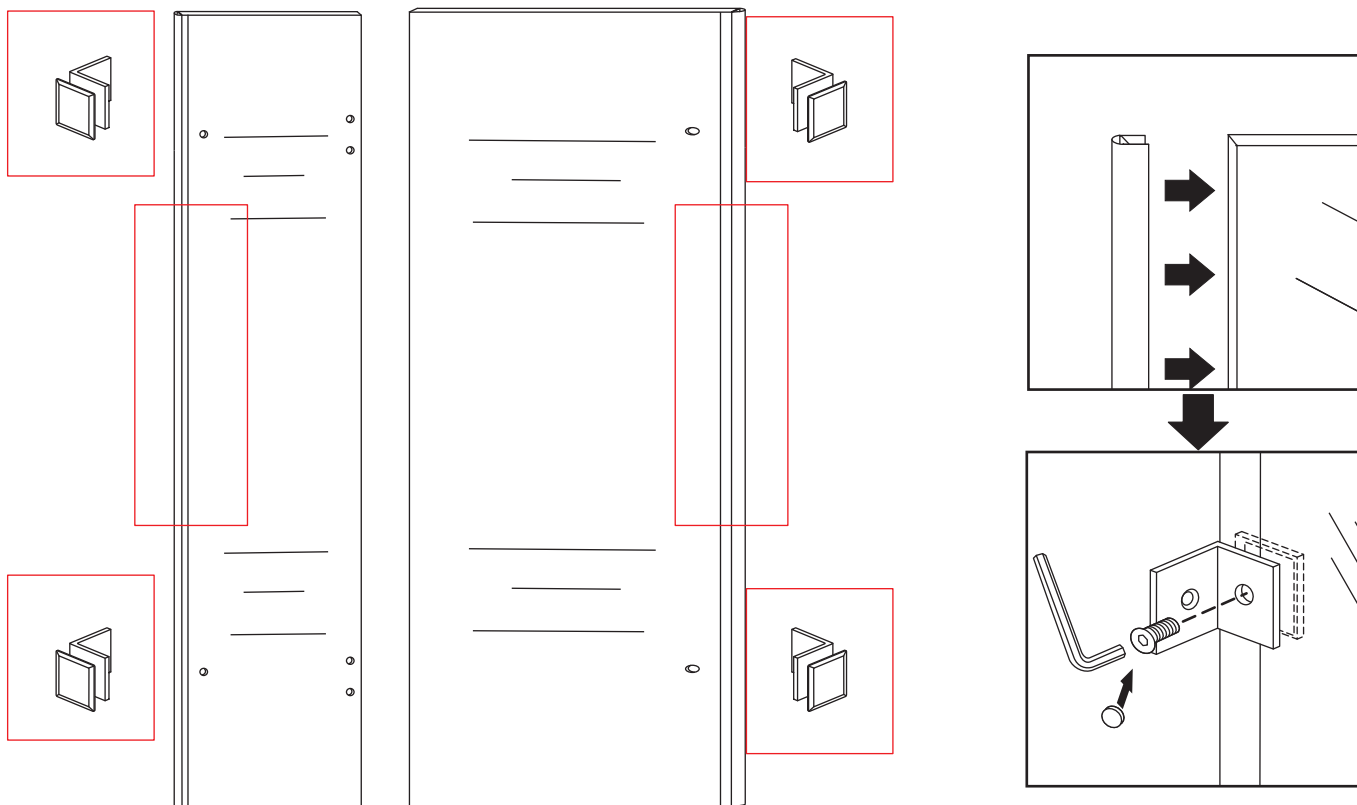
SCREW

1. Use pencil and ruler draw the vertical installation line

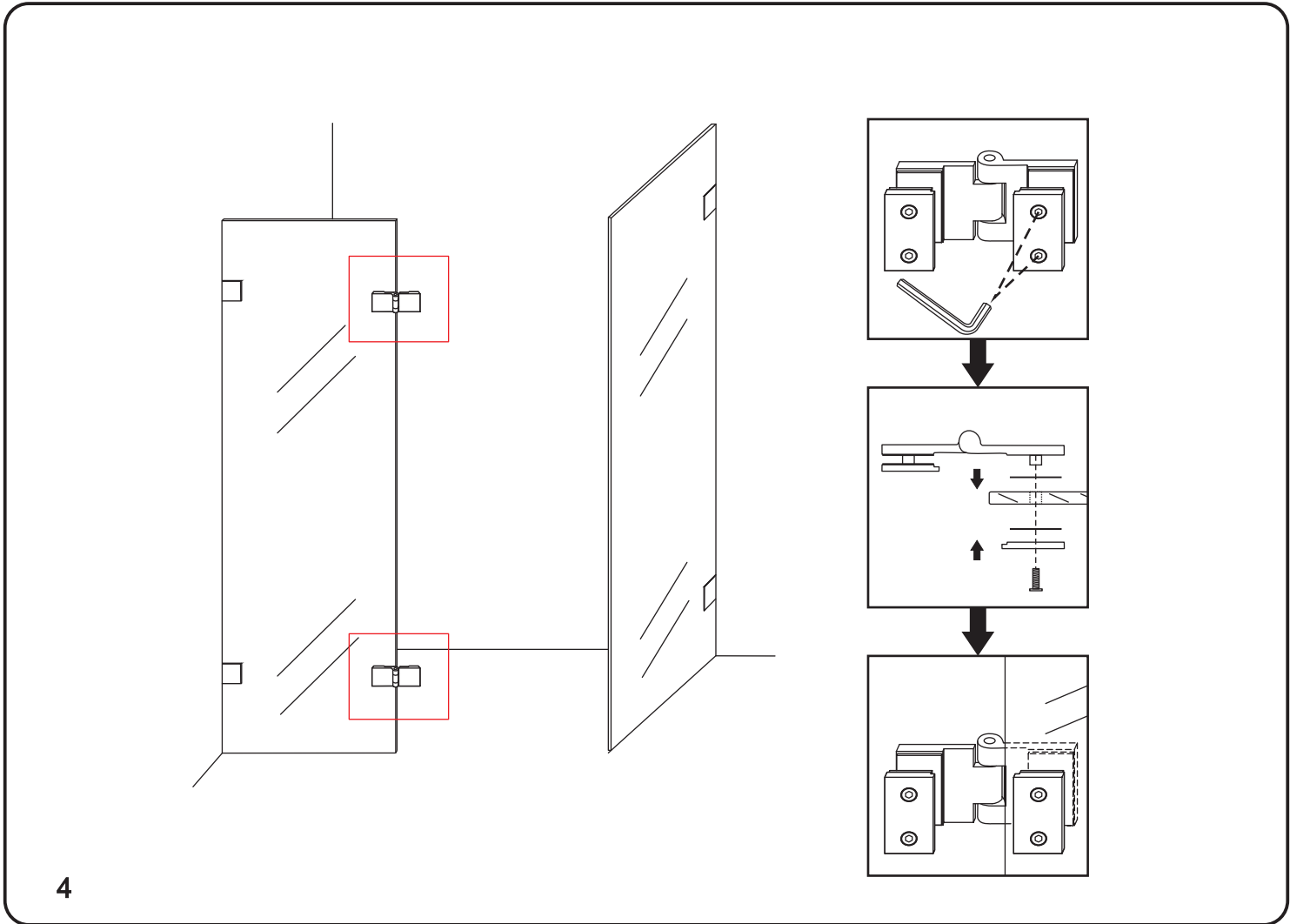
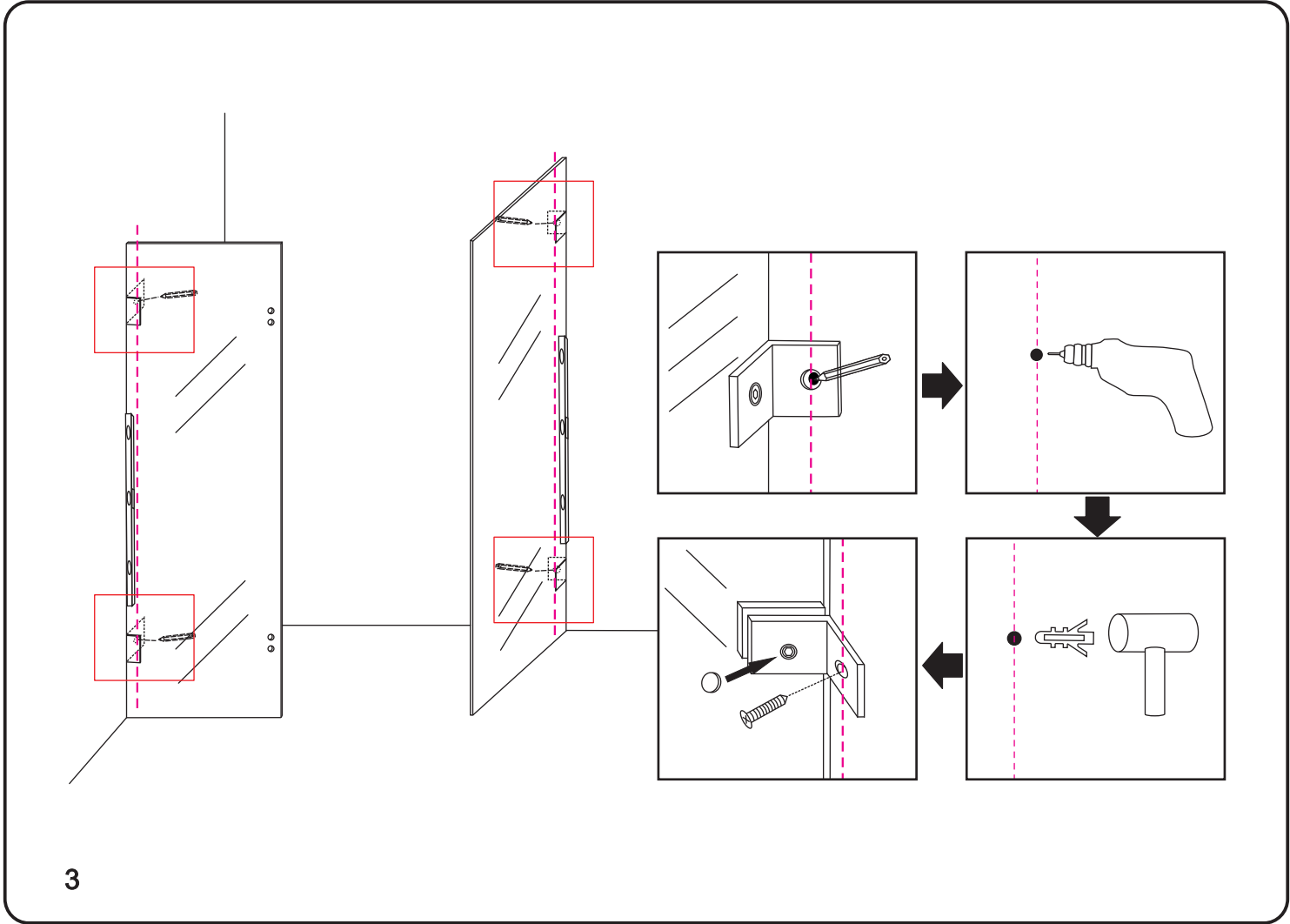
shower enclosure size	The installation size L1	The installation size L2
1200X800	1145	745
1200X900	1145	845

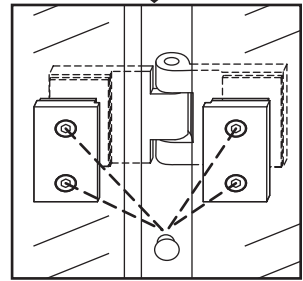
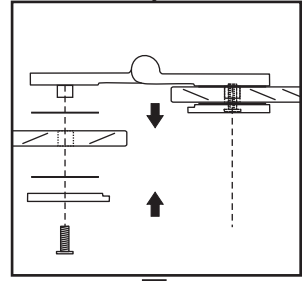
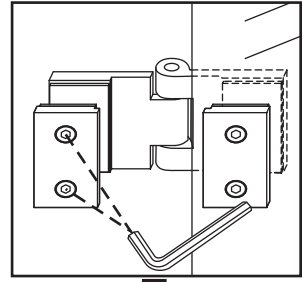
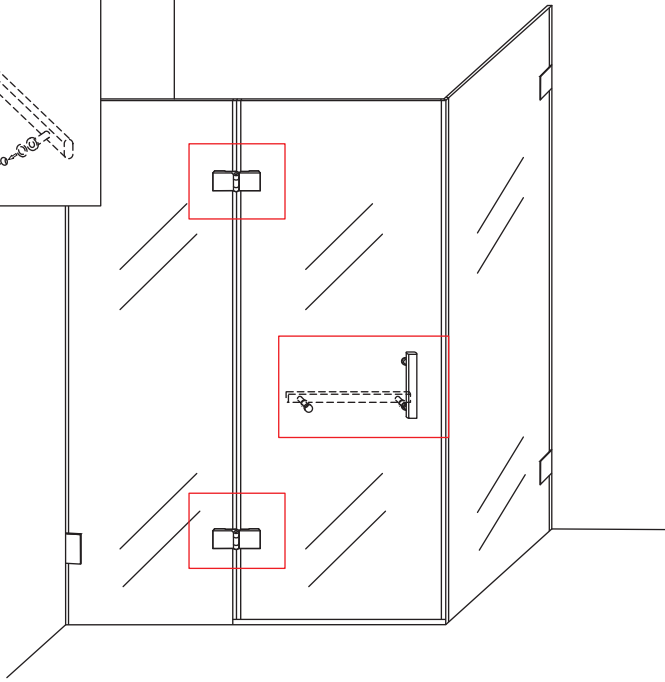
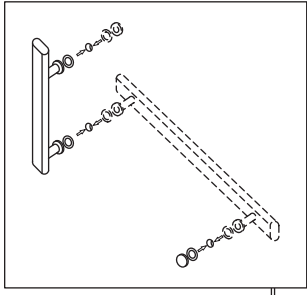


1

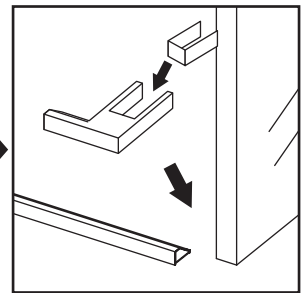
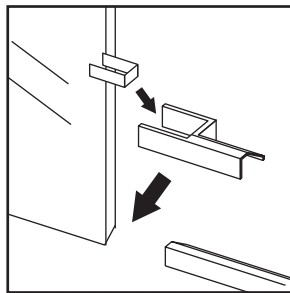
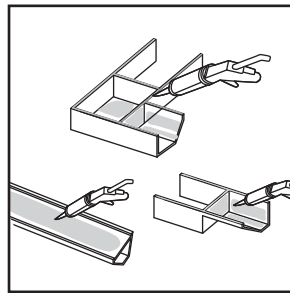
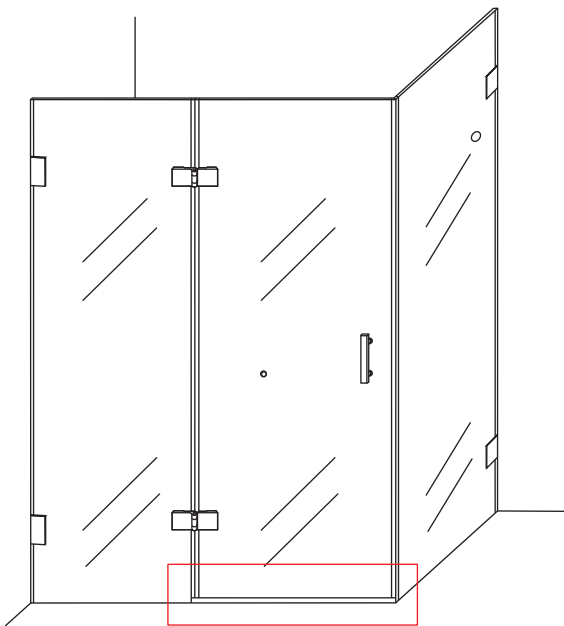


2

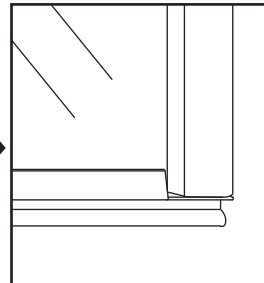
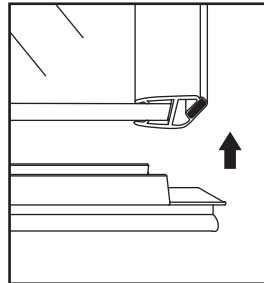
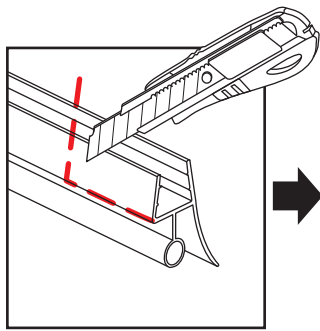
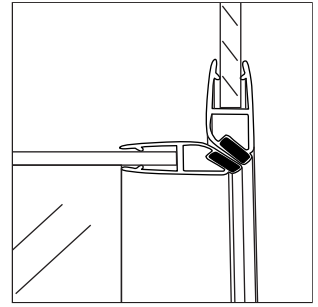
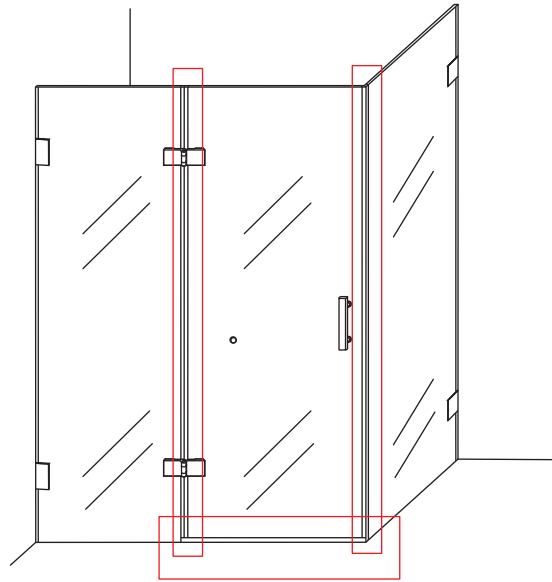
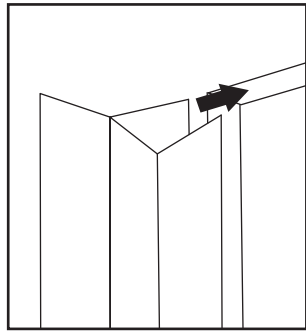




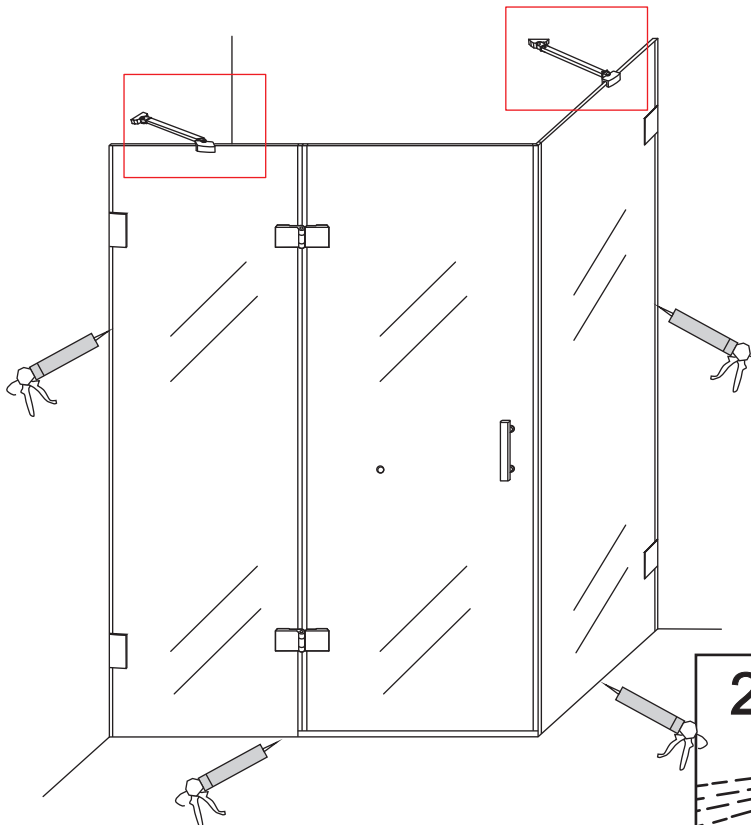
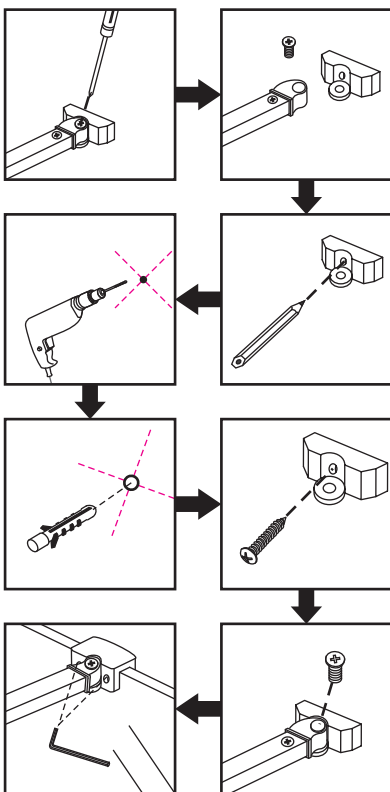
5



6



7



8